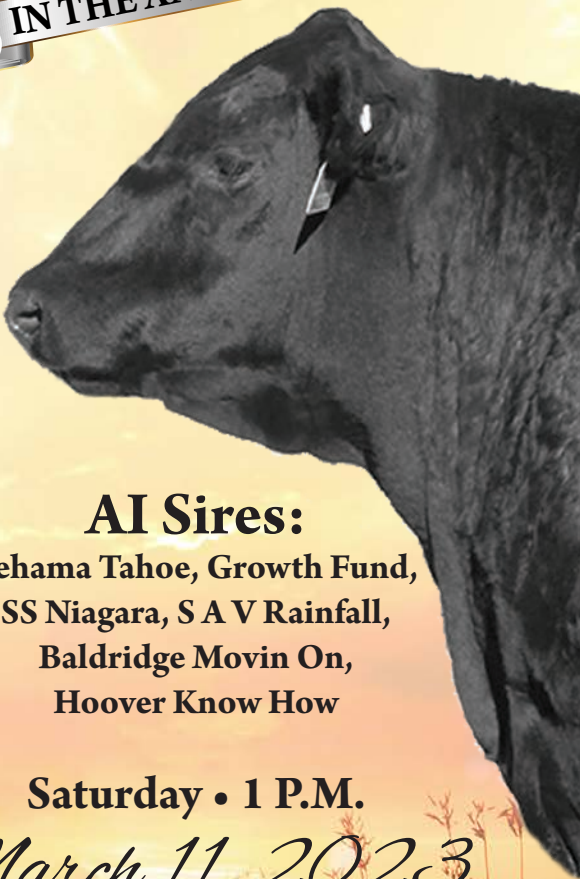


# SUNNYHILL ANGUS FARM

*33<sup>rd</sup> Annual*  
**Bull and Female Sale**

**83** <sup>Years</sup> **IN THE ANGUS BUSINESS**



## **AI Sires:**

**Tehama Tahoe, Growth Fund,  
SS Niagara, S A V Rainfall,  
Baldrige Movin On,  
Hoover Know How**

**Saturday • 1 P.M.**

*March 11, 2023*  
**at the Farm**

**AHIR**  
Since 1976

**GPS Location:**  
33499 N IL 97, Fairview IL 61432  
309-338-2957 | 3 Mi. North of Fairview

**LiveAuctions.TV**

# SUNNYHILL ANGUS FARM

*33<sup>rd</sup> Annual* **Bull and Female Sale**

**Saturday • 1 P.M.**

*March 11, 2023*

**At the farm**

**33499 N ST RT 97, Fairview, IL 61432**

**Auctioneer:** Phil Schooley 642-664-3450

**Sale Manager:** American Angus Hall of Fame 816-532-0811

**Representatives:** Casey Jentz, *Angus Journal* 608-234-1998

Roger Holmstrom, *Midwest Marketer* 309-245-2949

Kent Lock 309-465-7857

**Sale Day Phone:** 309-338-2957 or 309-338-6696

**Terms and Conditions:** Cattle sell under the terms and conditions recommended by the American Angus Association.

**Delivery:** Free delivery for bulls within a 100 mile radius. Boarding is available for a nominal fee for yearling bulls only.

**Volume and pick up discounts:** Offered on bulls only.

**Announcements:** Announcements made on sale day take precedence over printed material.

## **Herd Health:**

- Bulls are semen tested and guaranteed breeders
- Yearling bulls are tested free of PI BVD
- Complete herd health vaccination program under the guidance of Bushnell Veterinary Clinic

**Lunch:** Complimentary lunch sale day in our heated sale facility

**Accommodations:** Econo Lodge, Canton, IL 309-647-1888, or

Harvester Inn, 309-647-5820 or call us for other options

**Sight Unseen Guarantee:** If unable to attend, leave bids with the auctioneer, representatives or us. Satisfaction guaranteed. Cattle may be inspected any time at the farm at your convenience.

**Snow Date:** Monday, March 13, 2023

**Kent, Wendy, Emily Schleich-Carroll, and Thaddeus**

34441 N IL HWY 97 • Fairview IL 61432

Site is 3 mi N of Fairview on Rt 97

Kent 309-338-2957 | Wendy 309-338-6696

sunnyhillangusfarm@gmail.com

***sunnyhillangus.com***

AHIR Since 1976 Quality Angus Since 1940

**Not responsible for accidents**



EPDs contained in the hard copy of this sale book were current as of print date. Digital versions of this sale book can be viewed online at [www.Angus.org](http://www.Angus.org) and will have EPDs updated every Friday with the exception of EPD references in footnotes and photos. Any PDF downloads from the website will contain EPDs current as of the date downloaded. References: American Angus Association®, AHIR®, AngusLink<sup>SM</sup>, CAB®, Pathfinder®.

**Welcome to our 33rd annual Bull and Female Sale at Sunnyhill. We are grateful for all our customers, past and present, and appreciate your business and your friendship. We look forward to seeing you, as well as the new buyers.**

**This is a great time to be in the cattle business. We, as cattlemen, produce a great product and the genetic selection tools we now have are amazing. Because of this and mating selections, we continue to produce a better set of bulls every year. There are numerous pedigree and genetic trait characteristics from which you can select for your particular cattle operation. We continue to offer some elite heifers in phenotype and genetic data. The cows have produced well here and are the product of years of AI and genetic selection.**

**We encourage you to take a look prior to the sale to judge for yourself. We always enjoy talking to visitors. If you have any questions, please don't hesitate to call, text or email. Videos are available at [sunnyhillangus.com](http://sunnyhillangus.com). Thanks again for looking at our sale book, and we hope to see you March 11 at Sunnyhill!**

## COMMENTS FROM THE SALE MANAGER

### *Generations of Genetics*

Sunnyhill Angus Farm has become your Midwest source for decades worth of performance selection, with quality Angus since 1940 and AHIR records since 1976. This 33rd Annual Angus Production Sale is set for Saturday, March 11, 2023 at the farm near Fairview, Illinois. Sunnyhill has cemented a reputation for being a reliable source of proven performance genetics with 83 years of producing registered Angus seedstock.

Selling will be 35 spring and fall yearling Angus bulls along with 30 Angus females comprised of spring bred cows and cow/calf pairs along with elite open heifers. Featured sires include Tehama Tahoe B767 as well as SS Niagara Z29, Tex Playbook 5347, Deer Valley Wall Street, Hoover Know How, Deer Valley Growth Fund and more.

If you are looking for outstanding and practical cattle backed by generations of performance plan now to be on hand sale day. Please don't hesitate to call on us at American Angus Hall of Fame if we can be of assistance in any way. We are here to serve.



Sincerely,  
Tom Burke  
(816) 853-2697



Kurt Schaff  
(816) 520-6447



Alex Popplewell  
(270) 566-8822

# LiveAuctions.TV

Internet Bidding: 937/515-1194

The auction will be broadcast live on [www.liveauctions.tv](http://www.liveauctions.tv).  
Bidders must pre-register on the LATV website and may watch and bid live via their high-speed internet connections.

# Service Sires

## A Tehama Tahoe B767

#+\*17817177

#\*Sitz Upward 307R  
 \*Tehama Upward Y238  
 16760354 +Tehama Elite Blackbird T735

#\*S A V Final Answer 0035  
 +\*Tehama Mary Blackbird Y684  
 16876258 Tehama Mary Blackbird T073



CED	BW	WW	YW	\$B	\$C
+10	+0	+79	+135	+149	+277

## B Deer Valley Growth Fund

+\*18827828

#+\*Basin Payweight 0065  
 #+\*Basin Payweight 1682  
 17038724 21AR O Lass 7017

#\*Plattmere Weigh Up K360  
 +\*Deer Valley Rita 36113  
 17785214 +Deer Valley Rita 9457



CED	BW	WW	YW	\$B	\$C
+10	+1.4	+90	+169	+163	+281

## C S S Niagara Z29

#\*17287387

#\*SydGen CC & 7  
 #\*Hoover Dam  
 16124994 #Erica of Ellston C124

#\*B/R New Day 454  
 Jet SSX144  
 16715036 JET S S T151



CED	BW	WW	YW	\$B	\$C
+6	+9	+69	+138	+186	+297

## D Hoover Know How

\*18543644

#\*Mogck Bullseye  
 +\*Hoover No Doubt  
 17882682 \*Miss Blackcap Ellston J2

+SydGen Storm 8504  
 #Blkcp Empress Ellston L265  
 17314724 Blkcp Empress Ellston J120



CED	BW	WW	YW	\$B	\$C
+0	+3.0	+62	+131	+203	+331

# Service Sires

## E S A V Rainfall 6846

+\*18578963

#\*O C C Paxton 730P  
 #+\*Coleman Charlo 0256  
 16879074 +Bohi Abigale 6014

#S A V 8180 Traveler 004  
 \*S A V Blackcap May 4136  
 14739095 #+S A V May 2397



CED	BW	WW	YW	\$B	\$C
+8	+4	+56	+107	+118	+241

## F Baldrige Movin On G780

+\*19573709

Poss Easy Impact 0119  
 +\*Baldrige Alternative E125  
 18837398 Baldrige Blackbird A030

#+\*G A R Prophet  
 +\*Baldrige Isabel B061  
 18060653 \*Baldrige Isabel Y69



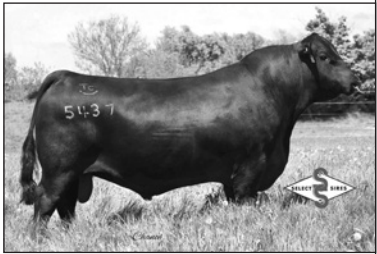
CED	BW	WW	YW	\$B	\$C
+11	-.4	+65	+114	+164	+289

## G TEX Playbook 5437

#+\*18414912

#+\*Basin Payweight 006S  
 #+\*Basin Payweight 1682  
 17038724 21AR O Lass 7017

#\*Summitcrest Complete 1P55  
 +\*Rita 1C43 of 9M26 Complete  
 17131969 +\*Rita 9M26 of Rita 5F56 Pred



CED	BW	WW	YW	\$B	\$C
+12	-.1	+60	+104	+126	+265

## H Deer Valley Wall Street

+\*18827829

SIRE: #+\*Basin Payweight 1682

Dam: #\*Plattermere Weigh Up K360

CED	BW	WW	YW
+8	+5	+75	+142

## I SHF Visionary 627 30

19663361

SIRE: Musgrave Invision

Dam: #\*Connealy Black Granite

CED	BW	WW	YW
+7	+1.5	+83	+147

## J SHF Barrell 800 23

19950776

SIRE: #\*S S Niagara Z29

Dam: #+\*Deer Valley Old Hickory

CED	BW	WW	YW
+11	+2	+61	+121

# Yearling Bulls

The bulls were raised in a non-pampered environment similar to that of our customers and were NOT CREEP FED. Post weaning, the bulls were fed in a large contemporary group on a ration designed to not over condition them. A complete herd health program is followed as recommended by Alan Barclay from Bushnell Vet Clinic. All bulls are semen tested and guaranteed breeders.

We encourage pick up of your bulls on sale day and offer a \$100 pick up discount. For a nominal fee, we can board your yearling bull, at your risk, until May 1. We also offer a volume discount on two or more bulls. We will be unable to board older bulls.

Sunnyhill Angus will keep a 1/3 semen interest in any or all of the bulls selling. The buyer keeps full possession and salvage value.

Most of the information updates should be done by February 28. We encourage you to look at the cattle prior to the sale. Compare the quality and docility of our bulls and their data. Compare the program behind them and compare our prices.



## 2 SHF Denali 003 2

Birth Date: 12-25-2021

Bull 20574829

Tattoo: 2250

\*Tehama Upward Y238

##Sitz Upward 307R

#+\*Tehama Tahoe B767

+Tehama Elite Blackbird T735

17817177

+\*Tehama Mary Blackbird Y684

##S A V Final Answer 0035

Tehama Mary Blackbird T073

#+\*TEX Playbook 5437

#+\*Basin Payweight 1682

SHF Playbk Erica305 707 003

+\*Rita 1C43 of 9M26 Complete

19958899

SHF All in Erica 305 20 316

##Deer Valley All In

SHF 454 Erica 305 955 316

**BW**

69

**WR**

113

**DAM'S NR**

1-113

CED	BW	WW	YW	MILK	\$B	\$C
+13	-.9	+67	+116	+36	+119	+235

High-performing Tahoe son out of a perfect Playbook daughter. Ratioed WWR of 113. Top 10% for CED. Great heifer bull to keep replacements out of.



### SHF Beemer 020 3 - Lot 3

## 3 SHF Beemer 020 3

Birth Date: 12-26-2021

Bull 20574833

Tattoo: 2251

\*Tehama Upward Y238

##Sitz Upward 307R

#+\*Tehama Tahoe B767

+Tehama Elite Blackbird T735

17817177

+\*Tehama Mary Blackbird Y684

##S A V Final Answer 0035

Tehama Mary Blackbird T073

+\*Deer Valley Growth Fund

#+\*Basin Payweight 1682

SHF Growth Fund 535 020

+\*Deer Valley Rita 36113

19958765

SHF Capital Enchant 535 223

##Connealy Capitalist 028

#SHF FinalProd Enchant 107 62

**BW**

77

**WR**

112

**DAM'S NR**

1-112

CED	BW	WW	YW	MILK	\$B	\$C
+14	-1.9	+74	+138	+42	+174	+307

Another high-ratioing Tahoe son out of a Growth Fund first calver. Top 4% CED, top 1% milk, top 10% YW, top 20% MARB, and top 5% \$C. Genomic standout.

# Yearling Bulls

## 4 SHF Motherlode 210 4

Birth Date: 12-26-2021

Bull 20574935

Tattoo: 2252

\*Tehama Upward Y238  
 #+\*Tehama Tahoe B767  
 17817177 +\*Tehama Mary Blackbird Y684  
 #Connealy Industry 5634  
 SHF Industry Erica 16 403 25  
 17363537 SHF 878 Erica 16 311 10

#\*Sitz Upward 307R  
 +Tehama Elite Blackbird T735  
 #\*S A V Final Answer 0035  
 Tehama Mary Blackbird T073  
 #Connealy Freightliner  
 Eilera of Conanga 2583  
 #Bon View New Design 878  
 Piere Erica 16 606 SHF

<b>BW</b>
94
<b>WR</b>
113
<b>DAM'S NR</b>
8-107

CED	BW	WW	YW	MILK	\$B	\$C
+9	+1.6	+63	+102	+32	+120	+234

Tahoe son ratioing WWR of 113. Powerful dam by Connealy Industry and granddam by 878, still producing at 18 years old.



**SHF Motherlode 210 4 - Lot 4**

## 5 SHF Geyser 018 5

Birth Date: 12-27-2021

Bull 20574574

Tattoo: 2253

#+\*Coleman Charlo 0256  
 +\*S A V Rainfall 6846  
 18578963 \*S A V Blackcap May 4136  
 +\*Deer Valley Wall Street  
 SHF Wall Street 920 018  
 19958882 SHF Objective Eileen 615 40

#\*O C C Paxton 730P  
 +Bohi Abigale 6014  
 #S A V 8180 Traveler 004  
 #+S A V May 2397  
 #+\*Basin Payweight 1682  
 +\*Deer Valley Rita 36113  
 #\*S S Objective T510 OT26  
 SHF Foreman Eileenmere 512

<b>BW</b>
78
<b>WR</b>
118
<b>DAM'S NR</b>
1-118

CED	BW	WW	YW	MILK	\$B	\$C
+6	+9	+68	+112	+30	+115	+247

Rainfall son that was the #1 weaning weight ratioing calf at WWR of 118. First-calf dam by Wall Street out of a high-producing Objective daughter.

# LiveAuctions.TV

**Internet Bidding: 937/515-1194**

The auction will be broadcast live on [www.liveauctions.tv](http://www.liveauctions.tv).  
 Bidders must pre-register on the LATV website and may watch and bid live via their high-speed internet connections.

# Yearling Bulls

## 7 SHF TrailBlazer Playbk 926 7

Birth Date: 12-31-2021

Bull 20574538

Tattoo: 2254

**\*Ferguson Trailblazer 239E**  
**18996007** #\*V A R Discovery 2240  
 #Molitor999 Barbella 940-3012  
 #+\*TEX Playbook 5437  
**SHF Playbook Enchant 103 63**  
**19654914** SHF Dash Enchantress 6 421

#\*A A R Ten X 7008 S A  
 +\*Deer Valley Rita 0308  
 #\*LD Emblazon 999  
 Molitor FA Barbella 389-940  
 #+\*Basin Payweight 1682  
 +\*Rita 1C43 of 9M26 Complete  
 #\*Sitz Dash 10277  
 #SHF 208 Enchantress 7010 59

<b>BW</b>
68
<b>WR</b>
101
<b>DAM'S NR</b>
1-101

CED	BW	WW	YW	MILK	\$B	\$C
+11	-1.3	+72	+127	+30	+139	+246

Solid, calving-ease bull by the Select Sires bull, Ferguson Trailblazer. Very nice Playbook dam with second dam by Sitz Dash. Top 10% BW.

## 10 SHF Excalibur 223 10

Birth Date: 01-02-2022

Bull 20574937

Tattoo: 2255

**#+\*Tehama Tahoe B767**  
**17817177** +\*Tehama Mary Blackbird Y684  
 #\*Connealy Final Product  
**#SHF FinalProd Enchant 107 62**  
**17363262** #SHF BND878 Enchantress 938

#\*Sitz Upward 307R  
 +Tehama Elite Blackbird T735  
 #\*S A V Final Answer 0035  
 Tehama Mary Blackbird T073  
 \*Connealy Product 568  
 #Ebonista of Conanga 471  
 #Bon View New Design 878  
 SHF 4X4 Enchantress 938 606

<b>BW</b>
86
<b>WR</b>
106
<b>DAM'S NR</b>
9-105

CED	BW	WW	YW	MILK	\$B	\$C
+0	+2.0	+70	+121	+35	+112	+223

Tahoe son that will be near the top end on test gain. Dam and granddam were phenotype all stars and Pathfinders.

## 11 SHF Vision Niagara 925 11

Birth Date: 01-02-2022

Bull 20572289

Tattoo: 2256

**SHF Visionary 627 30**  
**19663361** #SHF BLK Gnit Erica 229 1627  
 #\*S S Niagara Z29  
**SHF Niagara Erica 617 60**  
**19654645** SHF Blk Gnit Erica 127 1617

#MCATL Pure Product 903-55  
 MCATL Evergreen 619-K27T  
 #\*Connealy Black Granite  
 SHF Target Erica 9 626 73  
 #\*Hoover Dam  
 Jet S S X144  
 #\*Connealy Black Granite  
 SHF HH Erica 9 127 361 037

<b>BW</b>
76
<b>WR</b>
95
<b>DAM'S NR</b>
2-102

CED	BW	WW	YW	MILK	\$B	\$C
+11	-.6	+60	+120	+30	+165	+275

Very good son of Visionary, a previous sale top-end seller that we have used AI. Top 15% CED and BW, and top 10% RE. Great cow maker sires in the pedigree.

## 13 SHF Tahoe M32 5F 13

Birth Date: 01-03-2022

Bull 20579811

Tattoo: 2257

**#+\*Tehama Tahoe B767**  
**17817177** +\*Tehama Mary Blackbird Y684  
 #\*S S Niagara Z29  
**SHF Niagara Erica 200 905 5F**  
**20576047** SHF Impress Erica 016 2

#\*Sitz Upward 307R  
 +Tehama Elite Blackbird T735  
 #\*S A V Final Answer 0035  
 Tehama Mary Blackbird T073  
 #\*Hoover Dam  
 Jet S S X144  
 #\*Connealy Impression  
 SHF TJ Design Erica 808 29

<b>BW</b>
70
<b>WR</b>
100
<b>DAM'S NR</b>
1-100

CED	BW	WW	YW	MILK	\$B	\$C
+8	-.6	+63	+108	+26	+135	+236

Tahoe son with a 70 lb. birth weight. Granddam by Connealy Impression and sold to WL Ranch in Georgia.



# Yearling Bulls

## 17 SHF Niagara Blueprint 921 17

Birth Date: 01-05-2022

Bull 20574702

Tattoo: 2258

#\*S S Niagara Z29  
17287387 Hoover Dam  
Jet S S X144

#\*SydGen C C & 7  
#Erica of Ellston C124  
#\*B/R New Day 454  
JET S S T151  
#\*Connealy Confidence Plus  
\*Woodhill Evergreen Z291-B233  
#\*Connealy Black Granite  
SHF Final Product Barb 038 7

<b>BW</b>
78
<b>WR</b>
99
<b>DAM'S NR</b>
2-98

\*Woodhill Blueprint  
**SHF Blueprint Barbara 523 52**  
19654978 SHF Black Granite Barb 523

CED	BW	WW	YW	MILK	\$B	\$C
+12	-1.0	+44	+82	+31	+118	+215

Calving-ease son of S S Niagara. Top 10% CED and BW. Dam by Woodhill Blueprint. Next two dams by the cow maker bulls, Black Granite and Final Product.

## 18 SHF Exclusive Niagara 92318

Birth Date: 01-05-2022

Bull 20576067

Tattoo: 2259

#\*LD Capitalist 316  
**\*Musgrave 316 Exclusive**  
18130471 \*Musgrave Prim Lassie 163-386

#\*Connealy Capitalist 028  
LD Dixie Erica 2053  
#\*Musgrave Foundation  
#SCR Prim Lassie 80634  
#\*Hoover Dam  
Jet S S X144  
#\*Connealy Final Solution  
SHF GF Erica 16 909 45

<b>BW</b>
84
<b>WR</b>
98
<b>DAM'S NR</b>
2-100

#\*S S Niagara Z29  
**SHF Niagara Erica 326 57y**  
19654663 #SHF Solution Erica 023 326

CED	BW	WW	YW	MILK	\$B	\$C
+8	+4	+54	+102	+21	+133	+232

A heifer bull sired by Musgrave Exclusive and out of a second-calf Niagara daughter. Granddam by Connealy Final Solution was a Pathfinder dam.

## 20 SHF Consistent Return 821 20

Birth Date: 01-06-2022

Bull 20575986

Tattoo: 2260

#+\*Basin Payweight 1682  
**+\*Deer Valley Wall Street**  
18827829 +\*Deer Valley Rita 36113

#+\*Basin Payweight 0065  
21AR O Lass 7017  
#\*Plattemere Weigh Up K360  
+Deer Valley Rita 9457  
#\*B/R New Day 454  
+\*Sandpoint Blackbird 8809  
#\*SydGen C C & 7  
SHF Foresight Erica 16 43734

<b>BW</b>
86
<b>WR</b>
103
<b>DAM'S NR</b>
3-102

#+\*V A R Reserve 1111  
**SHF Reserve Erica 16 109 55**  
19363306 #SHF CC7 Erica 16 15 819

CED	BW	WW	YW	MILK	\$B	\$C
+5	+2.5	+75	+140	+29	+194	+313

This big-topped Wall Street son is top 2% \$F, top 4% RADG and \$C, top 10% YW, and top 20% RE. Dam by V A R Reserve 1111 is out of a Pathfinder CC&7 daughter.



**SHF Consistent Return 821 20 - Lot 20**

# Yearling Bulls



## SHF Corner Post 023 21 - Lot 21

# 21 SHF Corner Post 023 21

Birth Date: 01-06-2022

Bull 20574643

Tattoo: 2261

#+\*Basin Payweight 1682  
 #+\***TEX Playbook 5437**  
**18414912** +\*Rita 1C43 of 9M26 Complete  
 +\*Deer Valley Unique 5635  
**SHF Unique Erica16 109 023**  
**19958902** #SHF CC7 Erica 16 15 819

#+\*Basin Payweight 0065  
 21AR O Lass 7017  
 #\*Summitcrest Complete 1P55  
 +\*Rita 9M26 of Rita 5F56 Pred  
 #\*Plattemere Weigh Up K360  
 +\*Sitz Henrietta Pride 643T  
 #\*SydGen C C & 7  
 SHF Foresight Erica 16 43734

<b>BW</b>
77
<b>WR</b>
111
<b>DAM'S NR</b>
1-111

CED	BW	WW	YW	MILK	\$B	\$C
+3	+1.4	+67	+122	+25	+151	+257

SHF Corner Post is an outstanding Tex Playbook son with a little extra frame. Out of a first-calf Unique daughter and a Pathfinder granddam. Ratioed WWR of 111.



## SHF GF Max 911 22 - Lot 22

# 22 SHF GF Max 911 22

Birth Date: 01-07-2022

Bull 20574956

Tattoo: 2262

#+\*Basin Payweight 1682  
 #+\***Deer Valley Growth Fund**  
**18827828** +\*Deer Valley Rita 36113  
 #+\*K C F Bennett Fortress  
**ShF Fortress Enchant 715 28**  
**19654638** SHF Reserve Enchant 42 612

#+\*Basin Payweight 0065  
 21AR O Lass 7017  
 #\*Plattemere Weigh Up K360  
 +Deer Valley Rita 9457  
 #\*Connealy Consensus  
 \*Thomas Patricia 9705  
 #+\*V A R Reserve 1111  
 SHF Newline Enchantress 912

<b>BW</b>
76
<b>WR</b>
110
<b>DAM'S NR</b>
2-105

CED	BW	WW	YW	MILK	\$B	\$C
+14	-.6	+89	+164	+30	+148	+255

Deep-ribbed performance powerhouse by Growth Fund ratioing WWR of 110 and on track to be #1 at yearling. Couples top 4% CED with top 2% WW and top 1% YW.

# Yearling Bulls

## 23 SHF GrowthFund Hickory 806 23

Birth Date: 01-08-2022

Bull 20574972

Tattoo: 2263

#+\*Basin Payweight 1682

#+\*Basin Payweight 0065

**\*Deer Valley Growth Fund**

21AR O Lass 7017

18827828

#+\*Deer Valley Rita 36113

##\*Plattemere Weigh Up K360

+Deer Valley Rita 9457

#+\*Deer Valley Old Hickory

##\*Plattemere Weigh Up K360

**SHF Hickory 210 19**

+\*Deer Valley Rita 1126

19364983

SHF Industry Erica 16 403 25

#Connealy Industry 5634

SHF 878 Erica 16 311 10

**BW**

81

**WR**

97

**DAM'S NR**

2-101

CED	BW	WW	YW	MILK	\$B	\$C
+14	-.3	+70	+128	+35	+134	+240

Growth Fund son out of a beautiful Old Hickory daughter and the grand-dam is the mother of the outstanding Lot 4 bull. Top 10% CED, and he will be in the top 5 on test gainers.

## 25 SHF Know How Tahoe 90525

Birth Date: 01-08-2022

Bull 20574573

Tattoo: 2264

#+\*Hoover No Doubt

##\*Mogck Bullseye

**\*Hoover Know How**

\*Miss Blackcap Ellston J2

18543644

#Blkcp Empress Ellston L265

+SydGen Storm 8504

Blkcp Empress Ellston J120

#+\*Tehama Tahoe B767

\*Tehama Upward Y238

**SHF Tahoe Erica 738 16**

+\*Tehama Mary Blackbird Y684

19654712

SHF HH Erica 304 93 224

SHF Frontman Allround 906 21

SHF Windy Erica 304 202 64

**BW**

82

**WR**

107

**DAM'S NR**

2-102

CED	BW	WW	YW	MILK	\$B	\$C
+8	+8	+64	+116	+15	+123	+216

Calving-ease son of Hoover Know How with a maternal heritage of moderate-framed, good-producing cows.



**SHF Niagara Impress 101 26 - Lot 26**

## 26 SHF Niagara Impress 101 26

Birth Date: 01-09-2022

Bull 20574847

Tattoo: 2265

##\*Hoover Dam

##\*SydGen C C & 7

**##\*S S Niagara Z29**

#Erica of Ellston C124

17287387

Jet S S X144

##\*B/R New Day 454

JET S S T151

##\*Connealy Impression

#Connealy Reflection

**SHF Impression Erica 305 4**

Pearl Pammy of Conanga 194

17053449

SHF Grande Erica 305 955 401

#Tigre Grande P515 160 S H F

Piere Erica 305 502 SHF

**BW**

81

**WR**

107

**DAM'S NR**

10-103

CED	BW	WW	YW	MILK	\$B	\$C
+10	-.2	+57	+109	+27	+164	+271

One of the most complete sons of SS Niagara we have sold and out of a maternal line with unmatched longevity of production. Last five dams' calving intervals are 10-365, 13-365, 11-368, 14-364, and 12-365.

# Yearling Bulls



**SHF GrowthFund Hickry 800 27 - Lot 27**

## 27 SHF GrowthFund Hickry 800 27

Birth Date: 01-09-2022

Bull 20574971

Tattoo: 2266

#+\*Basin Payweight 1682  
 +\*Deer Valley Growth Fund  
 18827828

#+\*Basin Payweight 0065  
 21AR O Lass 7017  
 #\*Plattemere Weigh Up K360  
 +Deer Valley Rita 9457  
 #\*Plattemere Weigh Up K360  
 +\*Deer Valley Rita 1126  
 #\*SydGen C C & 7  
 SHF Foresight Barbara 922 21

+\*Deer Valley Rita 36113

#+\*Deer Valley Old Hickory

SHF Hickory Erica 018 3

19364991 #SHF CC&7 Barbara 709 33

**BW**

87

**WR**

98

**DAM'S NR**

3-101

CED	BW	WW	YW	MILK	\$B	\$C
+8	+6	+73	+137	+34	+169	+301

Calving-ease Growth Fund son in the top 1% genomic score for DOC. Top 15% YW, top 10% Milk and \$C. Granddam produced a top-selling heifer that sold to Dan Tolley.



**SHF Rainfall GrowthFund02728 - Lot 28**

## 28 SHF Rainfall GrowthFund02728

Birth Date: 01-09-2022

Bull 20574578

Tattoo: 2267

#+\*Coleman Charlo 0256  
 +\*S A V Rainfall 6846  
 18578963

#\*O C C Paxton 730P  
 +Bohi Abigale 6014  
 #S A V 8180 Traveler 004  
 #+S A V May 2397  
 #+\*Basin Payweight 1682  
 +\*Deer Valley Rita 36113  
 #\*Connealy Black Granite  
 SHF HH Erica 9 127 361 037

\*S A V Blackcap May 4136

+\*Deer Valley Growth Fund

SHF GrowthFund Erica 617 027

19958759 SHF Blk Grnit Erica 127 1617

**BW**

75

**WR**

102

**DAM'S NR**

1-102

CED	BW	WW	YW	MILK	\$B	\$C
+1	+3.1	+71	+125	+32	+146	+257

A high-gaining, free-moving, big, impressive son of S A V Rainfall. First-calver Growth Fund daughter bred back on first service and moved up 5 days. Top 10% RE.

# Yearling Bulls

## 29 SHF GF Leader 723 29 [DDP]

Birth Date: 01-09-2022

Bull 20574985

Tattoo: 2268

#+\*Basin Payweight 1682  
 +\*Deer Valley Growth Fund  
 18827828 +\*Deer Valley Rita 36113  
 #\*Connealy Final Solution  
 SHF Solution Jet 58 519  
 19046539 SHF Safeguard Jet 519 325

#+\*Basin Payweight 0065  
 21AR O Lass 7017  
 #\*Plattemere Weigh Up K360  
 +Deer Valley Rita 9457  
 #Connealy Answer 71  
 Este of Conanga 364  
 #\*PA Safeguard 021  
 SHF 458a Jetliner 731 325

<b>BW</b>
76
<b>WR</b>
105
<b>DAM'S NR</b>
3-99

CEB	BW	WW	YW	MILK	\$B	\$C
+8	-.2	+89	+162	+30	+191	+321

If you like a bigger-framed bull with tremendous performance, this bull has it. Top 2% WW, 1% YW, and top 3% \$C. Dam traces to the Jorgenson performance herd.

## 33 SHF KnowHow Impress 701 33

Birth Date: 01-13-2022

Bull 20574583

Tattoo: 2269

+\*Hoover No Doubt  
 #\*Hoover Know How  
 18543644 #Blkcp Empress Ellston L265  
 #+\*Mohnen Impressive 1093  
 SHF Impressive Eileen 4 920  
 19052623 SHF Objective Eileen 615 40

#\*Mogck Bullseye  
 \*Miss Blackcap Ellston J2  
 +SydGen Storm 8504  
 Blkcp Empress Ellston J120  
 #\*Basin Excitement  
 #\*Mohnen Jilt 787  
 #\*S S Objective T510 0T26  
 SHF Foreman Eileenmere 512

<b>BW</b>
71
<b>WR</b>
86
<b>DAM'S NR</b>
4-97

CEB	BW	WW	YW	MILK	\$B	\$C
+8	+0	+52	+98	+22	+146	+258

Calving-ease prospect by the Select Sires bull, Hoover Know How. Balanced-trait bull out of a Mohnen Impression-sired dam.

## 36 SHF Playbook Unique 026 36

Birth Date: 01-15-2022

Bull 20574606

Tattoo: 2270

#+\*Basin Payweight 1682  
 #+\*TEX Playbook 5437  
 18414912 +\*Rita 1C43 of 9M26 Complete  
 +\*Deer Valley Unique 5635  
 SHF Unique Enchant 613 026  
 19958625 #SHF Granite Product 223 1613

#+\*Basin Payweight 0065  
 21AR O Lass 7017  
 #\*Summitcrest Complete 1P55  
 +\*Rita 9M26 of Rita 5F56 Prod  
 #\*Plattemere Weigh Up K360  
 +\*Sitz Henrietta Pride 643T  
 #\*Connealy Black Granite  
 #SHF FinalProd Enchant 107 62

<b>BW</b>
78
<b>WR</b>
104
<b>DAM'S NR</b>
1-104

CEB	BW	WW	YW	MILK	\$B	\$C
+0	+2.6	+74	+126	+30	+142	+245

Tex Playbook son ratioing WWR of 104. Maternal side is full of great cows, and I would expect rapid early growth and good replacements from this bull.

## 38 SHF MovinOn WallSt 000 38

Birth Date: 01-17-2022

Bull 20574590

Tattoo: 2271

+\*Baldridge Alternative E125  
 #\*Baldridge Movin On G780  
 19573709 +\*Baldridge Isabel B061  
 +\*Deer Valley Wall Street  
 SHF WallStreet Erica 627 000  
 19958876 #SHF BLK Grrit Erica 229 1627

Poss Easy Impact 0119  
 Baldridge Blackbird A030  
 #+\*G A R Prophet  
 \*Baldridge Isabel Y69  
 #+\*Basin Payweight 1682  
 +\*Deer Valley Rita 36113  
 #\*Connealy Black Granite  
 SHF Target Erica 9 626 73

<b>BW</b>
68
<b>WR</b>
102
<b>DAM'S NR</b>
1-102

CEB	BW	WW	YW	MILK	\$B	\$C
+13	-.2	+72	+121	+20	+175	+309

Sired by Baldridge Movin On, this bull offers outcross calving-ease genetics. Dam by Wall Street and granddam is a Pathfinder. Top 5% \$C, top 10% CED, and top 20% WW.

# Yearling Bulls

## 40 SHF Visionary WeighUp 632 40

Birth Date: 01-19-2022

Bull 20572290

Tattoo: 2272

Musgrave Invision  
**SHF Visionary 627 30**  
**19663361** #SHF BLK Gmit Erica 229 1627  
 SHF Weigh Up Objective 52  
**SHF Weighup Erica 336 1632**  
**18713523** SHF Hoover Erica 16 602 336

#MCATL Pure Product 903-55  
 MCATL Evergreen 619-K27T  
 #\*Connealy Black Granite  
 SHF Target Erica 9 626 73  
 #\*Plattemere Weigh Up K360  
 SHF Objective Eileen 615 40  
 #\*Hoover Dam  
 SHF Newsline Erica 16 221

<b>BW</b>
81
<b>WR</b>
105
<b>DAM'S NR</b>
4-102

CEB	BW	WW	YW	MILK	\$B	\$C
+7	+0	+59	+108	+36	+138	+247

Son of SHF Visionary with a WWR of 105. With a top 4% milk EPD, his dam sells as Lot 124. Granddam was a great producer of females for us with one selling to Bob and Julie Hampton.



**SHF KnowHow Comrad 600 41 - Lot 41**

## 41 SHF KnowHow Comrad 600 41

Birth Date: 01-22-2022

Bull 20574625

Tattoo: 2273

+\*Hoover No Doubt  
**\*Hoover Know How**  
**18543644** #Blkcp Empress Ellston L265  
 #\*Connealy Comrade 1385  
**SHF Comrade ERICA16 423 1600**  
**18718256** SHF Weigh Up Erica 16 56 403

#\*Mogck Bullseye  
 \*Miss Blackcap Ellston J2  
 +SydGen Storm 8504  
 Blkcp Empress Ellston J120  
 #\*Connealy Consensus 7229  
 Happy Gee of Conanga 919  
 #\*Plattemere Weigh Up K360  
 SHF 878 Erica 16 311 10

<b>BW</b>
75
<b>WR</b>
104
<b>DAM'S NR</b>
5-104

CEB	BW	WW	YW	MILK	\$B	\$C
+9	+2	+63	+125	+18	+146	+255

Stout Know How son out of a moderate, low-birth Connealy Comrade daughter that traces to a Foundation Cow. WWR of 104 with very high genomic profile for YW and Feet.

## 43 SHF MovinOn Complmnt 704 43

Birth Date: 01-23-2022

Bull 20574603

Tattoo: 2274

+\*Baldridge Alternative E125  
**\*Baldridge Movin On G780**  
**19573709** +\*Baldridge Isabel B061  
 #\*EF Complement 8088  
**SHF Complement Erica 12 536**  
**19041282** SHF Hoover Erica 66 12

Poss Easy Impact 0119  
 Baldridge Blackbird A030  
 #+\*G A R Prophet  
 \*Baldridge Isabel Y69  
 #Basin Franchise P142  
 +EF Everelda Entense 6117  
 SHF Hoover Thunder 112 836  
 SHF Impact Erica 16 148 307

<b>BW</b>
77
<b>WR</b>
92
<b>DAM'S NR</b>
3-104

CEB	BW	WW	YW	MILK	\$B	\$C
+10	+5	+57	+104	+28	+153	+276

Another Movin On son with great genomic foot scores out of a very nice EF Complement daughter. Heifer bull with top 20% CED, 15% SC, 25% Marb, and 20% \$C.

# Yearling Bulls

## 48 SHF Movin On SSC 025 48

Birth Date: 01-25-2022

Bull 20574591

Tattoo: 2275

+\*Baldridge Alternative E125  
 +\*Baldridge Movin On G780  
 19573709 +\*Baldridge Isabel B061

Poss Easy Impact 0119  
 Baldridge Blackbird A030  
 #+\*G A R Prophet  
 \*Baldridge Isabel Y69  
 \*\*K C F Bennett Southside  
 SHF Capital Enchant 535 223  
 #+Woodhill Foresight  
 SHF GF Barbara 102063

<b>BW</b>
78
<b>WR</b>
100
<b>DAM'S NR</b>
1-100

SHF Southside Capital 535 46  
 SHF SSC Barbara 807 025  
 19954964 #SHF Foresight Barbara 521 13

CED	BW	WW	YW	MILK	\$B	\$C
+7	+1.5	+67	+118	+30	+153	+265

A bigger framed Movin On son that will work on heifers. Dam is a first calver and granddam is a Pathfinder by Woodhill Foresight. Top 20% RE.

## 49 SHF GrowthFund Golden 836 49

Birth Date: 01-25-2022

Bull 20574998

Tattoo: 2276

+\*Deer Valley Growth Fund  
 18827828 +\*Deer Valley Rita 36113

#+\*Basin Payweight 1682  
 #+\*Basin Payweight 0065  
 21AR O Lass 7017  
 #\*Plattermere Weigh Up K360  
 +Deer Valley Rita 9457  
 #Baldridge Kaboom K243 KCF  
 #Parka of Conanga 241  
 #Bon View New Design 878  
 Piere Erica 16 606 SHF

<b>BW</b>
92
<b>WR</b>
110
<b>DAM'S NR</b>
12-104

#Connealy Thunder  
 SHF Thunder Erica 16 403 92  
 16147207 SHF 878 Erica 16 311 10

CED	BW	WW	YW	MILK	\$B	\$C
+6	+1.7	+76	+129	+33	+127	+243

Sired by Growth Fund out of a 15-year-old dam by Connealy Thunder. The second dam is by an 878 daughter. Have used two herd bulls out of this bull's dam. Top 15% WW and Milk.

## 50 SHF TrailBlazr WeighUp 62550

Birth Date: 01-26-2022

Bull 20574599

Tattoo: 2277

#\*V A R Discovery 2240  
 \*Ferguson Trailblazer 239E  
 18996007 #Molitor999 Barbella 940-3012

#\*A A R Ten X 7008 S A  
 +\*Deer Valley Rita 0308  
 #\*LD Emblazon 999  
 Molitor FA Barbella 389-940  
 #\*Plattermere Weigh Up K360  
 SHF Objective Eileen 615 40  
 #Poss Total Impact 745  
 SHF Newline Enchantress 912

<b>BW</b>
70
<b>WR</b>
96
<b>DAM'S NR</b>
5-99

SHF Weighup Enchant 319 1625  
 18713519 SHF Impact Enchant 612 319

CED	BW	WW	YW	MILK	\$B	\$C
+9	-.1	+68	+117	+25	+152	+279

Heifer bull by Ferguson Trailblazer that is doing well on gain test. Dam sells at Lot 120. Top 10% MARB and top 30% CED.

## 55 SHF On Target 924 55

Birth Date: 01-29-2022

Bull 20574602

Tattoo: 2278

+\*Baldridge Alternative E125  
 +\*Baldridge Movin On G780  
 19573709 +\*Baldridge Isabel B061

Poss Easy Impact 0119  
 Baldridge Blackbird A030  
 #+\*G A R Prophet  
 \*Baldridge Isabel Y69  
 #+\*Basin Payweight 1682  
 +\*Rita 1C43 of 9M26 Complete  
 #+Woodhill Foresight  
 SHF GF Barbara 102063

<b>BW</b>
76
<b>WR</b>
102
<b>DAM'S NR</b>
2-101

#+\*TEX Playbook 5437  
 SHF Playbook Barbara 807 59  
 19654925 #SHF Foresight Barbara 521 13

CED	BW	WW	YW	MILK	\$B	\$C
+13	-.3	+80	+140	+21	+156	+296

Outstanding Movin On son out of a Playbook dam. Top 10% CED, WW, YW, \$C, and top 20% MARB.

# Yearling Bulls

## 62 SHF Playbook Niagara 008 62

Birth Date: 02-04-2022

Bull 20574604

Tattoo: 2279

#+\*Basin Payweight 1682  
 #+\*TEX Playbook 5437  
 18414912 +\*Rita 1C43 of 9M26 Complete

#+\*Basin Payweight 0065  
 21AR O Lass 7017  
 #\*Summitcrest Complete 1P55  
 +\*Rita 9M26 of Rita 5F56 Pred  
 #\*Hoover Dam  
 Jet S S X144  
 #\*Connealy Comrade 1385  
 SHF Weigh Up Erica 16 56 403

#\*S S Niagara Z29  
 SHF Niagara Erica 600 008  
 19958831 SHF Comrade ERICA16 423 1600

<b>BW</b>
65
<b>WR</b>
103
<b>DAM'S NR</b>
1-103

CED	BW	WW	YW	MILK	\$B	\$C
+6	+1.4	+73	+131	+28	+146	+271

Tex Playbook son out of a very nice first calf Niagara daughter that is a half sister to the Lot 41 bull. Top 20% WW and YW, and top 25% \$C.

## 73 SHF Solution Fortress 720 73

Birth Date: 02-21-2022

Bull 20572291

Tattoo: 2280

#+\*Tehama Tahoe B767  
 SHF Tahoe Solution 723 2  
 19652356 SHF Solution Jet 58 519

\*Tehama Upward Y238  
 +\*Tehama Mary Blackbird Y684  
 #\*Connealy Final Solution  
 SHF Safeguard Jet 519 325  
 #\*Connealy Consensus  
 \*Thomas Patricia 9705  
 #\*Connealy Final Product  
 #SHF New Design Erica 9 840

#+\*K C F Bennett Fortress  
 SHF Fortress 51 513  
 19046633 SHF Final Prod Erica 513 017

<b>BW</b>
73
<b>WR</b>
99
<b>DAM'S NR</b>
3-100

CED	BW	WW	YW	MILK	\$B	\$C
+9	+1	+65	+114	+27	+151	+291

Sired by Tahoe Solution who is a maternal brother to Lot 29. A heifer bull, he is also top 35% Marb, top 30% RE, and top 15% \$C.

## 91 SHF Barrel C14 006 91

Birth Date: 03-06-2022

Bull 20572292

Tattoo: 2281

#\*S S Niagara Z29  
 SHF Barrell 800 23  
 19950776 SHF Hickory Erica 018 3

#\*Hoover Dam  
 Jet S S X144  
 #+\*Deer Valley Old Hickory  
 #SHF CC&7 Barbara 709 33  
 #+\*Basin Payweight 1682  
 +\*Deer Valley Rita 36113  
 #+\*Mohnen Impressive 1093  
 SHF Impression Erica 305 4

+\*Deer Valley Growth Fund  
 SHF Grwth Fund Erica 514 006  
 19958764 SHF Impression Erica 514 28

<b>BW</b>
70
<b>WR</b>
106
<b>DAM'S NR</b>
1-106

CED	BW	WW	YW	MILK	\$B	\$C
+12	-.4	+69	+130	+29	+150	+264

Sired by an outstanding Niagara son and out of an impressive Growth Fund daughter. He blends top 10% CED with top 20% YW and top 30% \$C.

## 98 SHF Solution BlkGrnt 702 98

Birth Date: 03-12-2022

Bull 20572293

Tattoo: 2283

#+\*Tehama Tahoe B767  
 SHF Tahoe Solution 723 2  
 19652356 SHF Solution Jet 58 519

\*Tehama Upward Y238  
 +\*Tehama Mary Blackbird Y684  
 #\*Connealy Final Solution  
 SHF Safeguard Jet 519 325  
 #\*Connealy Consensus 7229  
 #Eura Elga of Conanga 9109  
 #V D A R Really Windy 4097  
 SHF FP Eileenmere 733 88

#\*Connealy Black Granite  
 SHF Black Granite Eileen 5  
 19046614 SHF Windy Eileenmere 043 43

<b>BW</b>
81
<b>WR</b>
103
<b>DAM'S NR</b>
4-104

CED	BW	WW	YW	MILK	\$B	\$C
+11	-.2	+64	+111	+29	+135	+254

Top 15% CED for this Tahoe Solution son. His dam is an extremely docile Connealy Black Granite, an outstanding producer with a WR of 4@104.



# Fall & Age-Advantage Bulls



## SHF SSC WarParty 438 6F - Lot 99

### 99 SHF SSC WarParty 438 6F

Birth Date: 08-21-2021

Bull 20577544

Tattoo: 204

SHF Southside Capital 535 46  
19039825 SHF Capital Enchant 535 223

#\*K C F Bennett Southside

#Nichols Extra K205

#\*K C F Miss 208 S11

#\*Connealy Capitalist 028

#SHF FinalProd Enchant 107 62

#+\*Werner War Party 2417

#\*Connealy Onward

+BAAR USA Lady Jaye 489

SHF War Party Erica 9 84 933

18066215 SHF 458 Erica 9 621 65

#Sitz New Design 458N

SHF 338 Erica 9 625 621

<b>BW</b>
N/A
<b>WR</b>
N/A
<b>DAM'S NR</b>
2-93

CED	BW	WW	YW	MILK	\$B	\$C
+7	+9	+47	+87	+32	+120	+234

This fall bull's sire is an easy keeper and so are his progeny. Females are moderate framed and breed back easy. Great cow families on both sides of pedigree. Low birth with top 15% \$M and MILK, top 25% \$EN, and weighed 1,570 lbs. on January 11.

### 100 SHF SSC None Better 420 6F

Birth Date: 10-21-2021

Bull 20577545

Tattoo: 206

SHF Southside Capital 535 46  
19039825 SHF Capital Enchant 535 223

#\*K C F Bennett Southside

#Nichols Extra K205

#\*K C F Miss 208 S11

#\*Connealy Capitalist 028

#SHF FinalProd Enchant 107 62

\*Riverbend None Better Y095

#\*Connealy Consensus 7229

+\*CCC Blackbird 9101

SHF None Better Erica 42 958

18053336 SHF FocalPoint Erica 148 123

SHF Focal Point 107 69

SHF Lucys Erica 16 701 148

<b>BW</b>
N/A
<b>WR</b>
N/A
<b>DAM'S NR</b>
2-101

CED	BW	WW	YW	MILK	\$B	\$C
+5	+1.8	+52	+90	+28	+105	+214

SHF Southside Capital's dam by Capitalist has a picture-perfect udder. This bull would make a great pair with Lot 99. Similar numbers.

### 101 SHF Rainfall Newslines 738 56

Birth Date: 02-07-2021

Bull 20270070

Tattoo: 2184

+\*S A V Rainfall 6846  
18578963 \*S A V Blackcap May 4136

#+\*Coleman Charlo 0256

#\*O C C Paxton 730P

+Bohi Abigale 6014

#S A V 8180 Traveler 004

#+S A V May 2397

#+Lemmon Newslines C804

#B/R New Design 036

White Fence Pride H1

SHF Newslines Barbara 326 112

15811589 #SHF Factor Barbara 941

+S A F Factor

SHF 4 Point 4 Barbara941 706

<b>BW</b>
89
<b>WR</b>
90
<b>DAM'S NR</b>
12-104

CED	BW	WW	YW	MILK	\$B	\$C
+2	+2.4	+45	+85	+28	+119	+224

Held this Rainfall son as a backup bull and to keep females. We are using the dam's Niagara son in the herd also.

# Age-Advantage Bulls & Open Heifers

## 102 SHF Rainfall Fortress 818 59

Birth Date: 02-13-2021

Bull 20270731

Tattoo: 2186

#+\*Coleman Charlo 0256

#\*O C C Paxton 730P

+\*S A V Rainfall 6846

+Bohi Abigale 6014

18578963

\*S A V Blackcap May 4136

#S A V 8180 Traveler 004

#+S A V May 2397

#+\*K C F Bennett Fortress

#\*Connealy Consensus

SHF Fortress Barbara 038 47

\*Thomas Patricia 9705

19364916

SHF FP Barbara 702 79

SHF Focal Point 107 69

SHF Objective Barbara 522 12

**BW**

88

**WR**

93

**DAM'S NR**

2-94

CED	BW	WW	YW	MILK	\$B	\$C
+5	+2.0	+58	+107	+24	+123	+233

Another Rainfall kept for same reason. Big-bodied, deep-ribbed, productive cows on the bottom side.

## 103 SHF Entice PI 736 62

Birth Date: 02-15-2021

Bull 20270169

Tattoo: 2188

SydGen Enhance

#\*SydGen Exceed 3223

\*MOGCK Entice

SydGen Rita 2618

18952921

#\*MOGCK Erica 2255

Mogck Sure Shot 253

MOGCK Erica 2162

SHF Pure Inspiration 38 44

#+\*Mohnen Impressive 1093

#SHF P44 Erica 16 88 57

SHF PureProd Erica 403 322

19041291

SHF F57 Erica 16 57 209

SHF CC&7 GF 530 57

SHF 878 Erica 16 035 20

**BW**

86

**WR**

100

**DAM'S NR**

2-104

CED	BW	WW	YW	MILK	\$B	\$C
+5	+1.4	+62	+113	+29	+144	+261

This Entice son was used on heifers. Top 25% \$M and top 35% \$C.

## 104 SHF SSCapital Erica16 937 12

Birth Date: 01-03-2022

Cow 20575883

Tattoo: 2203

#\*V A R Discovery 2240

#\*A A R Ten X 7008 S A

\*Ferguson Trailblazer 239E

+\*Deer Valley Rita 0308

18996007

#Molitor999 Barbella 940-3012

#\*LD Emblazon 999

Molitor FA Barbella 389-940

SHF Southside Capital 535 46

#\*K C F Bennett Southside

SHF SSCapital Erica 16 641 8

SHF Capital Enchant 535 223

19653365

SHF Rumbler ERICA16 251 1641

SHF Rumbler 037 29

SHF Target Erica 16 116 124

**BW**

80

**WR**

107

**DAM'S NR**

2-101

CED	BW	WW	YW	MILK	\$B	\$C
+2	+2.3	+78	+146	+23	+196	+318

Very nice Trailblazer daughter with a WWR of 107. She is in the top 10% WN, top 5% YW, top 2% Marb, top 4% \$C at +317. Genomic profile is 1% MARB and 1% DOC.



SHF SSCapital Erica16 937 12 - Lot 104

# Open Heifers



## SHF Growth Fund Barb 900 19 - Lot 105

### 105 SHF Growth Fund Barb 900 19

Birth Date: 01-06-2022

Cow 20576138

Tattoo: 2207

+\*Deer Valley Growth Fund  
18827828

#+\*Basin Payweight 1682

+\*Deer Valley Rita 36113

#+\*Tehama Tahoe B767

SHF Tahoe Barbara 719 4

19654709

SHF Invision Barbara 50 75

#+\*Basin Payweight 0065

21AR O Lass 7017

#\*Plattemere Weigh Up K360

+Deer Valley Rita 9457

\*Tehama Upward Y238

+\*Tehama Mary Blackbird Y684

Musgrave Invision

SHF Impression Barbara 75

**BW**

88

**WR**

130

**DAM'S NR**

2-119

CED	BW	WW	YW	MILK	\$B	\$C
+5	+2.3	+106	+181	+33	+187	+304

This Growth Fund daughter has unprecedented growth in our program with an actual WW of 778 lbs., and a WWR of 130. Top 1% in WW, YW, and top 10% \$C. Her Tahoe dam had one of last year's top bulls going to T and T Cattle.

### 106 SHF Rainfall Erica 913 51

Birth Date: 01-26-2022

Cow 20575927

Tattoo: 2218

+\*S A V Rainfall 6846

18578963

#+\*Coleman Charlo 0256

\*S A V Blackcap May 4136

#+\*Deer Valley Old Hickory

SHF Hickory Erica 445 35

19654728

SHF F57 Erica 96 947

#\*O C C Paxton 730P

+Bohi Abigale 6014

#S A V 8180 Traveler 004

#+S A V May 2397

#\*Plattemere Weigh Up K360

+\*Deer Valley Rita 1126

SHF CC&7 GF 530 57

#SHF Objective Erica 221 94

**BW**

71

**WR**

101

**DAM'S NR**

1-101

CED	BW	WW	YW	MILK	\$B	\$C
+5	+2.5	+74	+128	+24	+134	+232

S A V Rainfall daughter with top 15% WN and top 20% YW. Traces to the foundation Erica cow.

### 107 SHF Growth Fund Barb 914 56

Birth Date: 01-29-2022

Cow 20575615

Tattoo: 2221

+\*Deer Valley Growth Fund  
SHF Growth Fund Convo 62 40  
19950927

SHF Conversation Barb 62 31

#+\*Deer Valley Old Hickory

SHF Hickory Barbara 433 36

19654726

SHF Impression Barbara 75

#+\*Basin Payweight 1682

+\*Deer Valley Rita 36113

#\*SAC Conversation

SHF Hoover Barbara 31 038

#\*Plattemere Weigh Up K360

+\*Deer Valley Rita 1126

#\*Connealy Impression

SHF GF Barbara 500 92

**BW**

65

**WR**

106

**DAM'S NR**

2-107

CED	BW	WW	YW	MILK	\$B	\$C
+12	-.8	+66	+114	+29	+129	+232

Growth Fund granddaughter in top 35% WW. Same cow family that's in the Lot 105 pedigree.

# Open Heifers

## 108 SHF Exclusive Eileen 903 59

Birth Date: 02-01-2022

Cow 20576070

Tattoo: 2223

#+\*LD Capitalist 316  
**\*Musgrave 316 Exclusive**  
**18130471** \*Musgrave Prim Lassie 163-386

#\*Connealy Capitalist 028  
 LD Dixie Erica 2053  
 #\*Musgrave Foundation  
 #SCR Prim Lassie 80634  
 #\*Hoover Dam  
 Jet S S X144  
 #\*Connealy Black Granite  
 SHF Windy Eileenmere 043 43

<b>BW</b>
80
<b>WR</b>
99
<b>DAM'S NR</b>
2-106

#\*S S Niagara Z29  
**SHF Niagara Eileen 702 13**  
**19654637** SHF Black Granite Eileen 5

CEB	BW	WW	YW	MILK	\$B	\$C
+9	-.2	+59	+102	+34	+140	+262

Stylish Musgrave Exclusive daughter. Her dam by Niagara is also the dam of last year's Lot 90 featured heifer by Tehama Tahoe that sold to James Humble in Iowa.

## 109 SHF Solution Enchant 715 71

Birth Date: 02-15-2022

Cow 20575609

Tattoo: 2226

#+\*Tehama Tahoe B767  
**SHF Tahoe Solution 723 2**  
**19652356** SHF Solution Jet 58 519

\*Tehama Upward Y238  
 +\*Tehama Mary Blackbird Y684  
 #\*Connealy Final Solution  
 SHF Safeguard Jet 519 325  
 #\*B/R New Day 454  
 +\*Sandpoint Blackbird 8809  
 #+Lemmon Newsline C804  
 %SHF Lucys Boy Enchant 701

<b>BW</b>
72
<b>WR</b>
85
<b>DAM'S NR</b>
4-93

#+\*V A R Reserve 1111  
**SHF Reserve Enchant 42 612**  
**19055259** SHF Newsline Enchantress 912

CEB	BW	WW	YW	MILK	\$B	\$C
+10	-.5	+49	+88	+28	+138	+254

Sired by SHF Tahoe, this heifer's maternal sister is the dam of the featured bull, Lot 22.

## 110 SHF Solution Erica 601 82

Birth Date: 02-27-2022

Cow 20575610

Tattoo: 2227

#+\*Tehama Tahoe B767  
**SHF Tahoe Solution 723 2**  
**19652356** SHF Solution Jet 58 519

\*Tehama Upward Y238  
 +\*Tehama Mary Blackbird Y684  
 #\*Connealy Final Solution  
 SHF Safeguard Jet 519 325  
 #\*Connealy Consensus 7229  
 Happy Gee of Conanga 919  
 #\*Plattemere Weigh Up K360  
 SHF Thunder Erica 16 403 92

<b>BW</b>
74
<b>WR</b>
95
<b>DAM'S NR</b>
3-96

#\*Connealy Comrade 1385  
**SHF Comrade Erica 434 1601**  
**18718258** SHF Weigh Up Erica 78 836

CEB	BW	WW	YW	MILK	\$B	\$C
+12	-1.1	+56	+100	+29	+142	+279

Tehama Tahoe granddaughter that is top 10% CED, BW, and top 20% \$C. Dam by Connealy Comrade sells as Lot 118.

## 111 SHF Solution Erica 16 626 86

Birth Date: 03-02-2022

Cow 20575611

Tattoo: 2229

#+\*Tehama Tahoe B767  
**SHF Tahoe Solution 723 2**  
**19652356** SHF Solution Jet 58 519

\*Tehama Upward Y238  
 +\*Tehama Mary Blackbird Y684  
 #\*Connealy Final Solution  
 SHF Safeguard Jet 519 325  
 #MCC Daybreak  
 +\*QHF Blackcap 6E2 of 4V16 4355  
 SHF Grande Focus 306 98  
 SHF Direction Erica 16 009 1

<b>BW</b>
86
<b>WR</b>
93
<b>DAM'S NR</b>
4-101

#+\*Quaker Hill Rampage 0A36  
**SHF Rampage ERICA16 057 1626**  
**18716995** SHF GF Erica 16 116 133

CEB	BW	WW	YW	MILK	\$B	\$C
+6	+1.7	+60	+107	+26	+146	+275

Another Tahoe granddaughter, this one is out of a Rampage daughter. She has a maternal sister by Tex Playbook in the herd. Dam sells as Lot 121. Top 20% \$C.

# Open Heifers

## 112 SHF Niagara Enchantr 936 87

Birth Date: 03-02-2022

Cow 20575617

Tattoo: 2230

##\*S S Niagara Z29  
**SHF Niagara PureProd 322 76**  
**19652279** SHF PureProd Erica 403 322

##Hoover Dam  
 Jet S S X144  
 #MCATL Pure Product 903-55  
 SHF 878 Erica 16 311 10

##\*S S Niagara Z29  
**SHF Niagara Enchant 613 79**  
**19654643** #SHF Granite Product 223 1613

##Hoover Dam  
 Jet S S X144  
 ##Connealy Black Granite  
 #SHF FinalProd Enchant 107 62

<b>BW</b>
71
<b>WR</b>
94
<b>DAM'S NR</b>
2-102

CED	BW	WW	YW	MILK	\$B	\$C
+10	-.7	+55	+104	+30	+151	+253

Double bred to SS Niagara and has a maternal sister in the herd. Top 15% BW and top 20% CED. Great granddam is the mother of Lot 10 bull.

## 113 SHF Solution Erica6 822 99

Birth Date: 03-19-2022

Cow 20575614

Tattoo: 2234

##+\*Tehama Tahoe B767  
**SHF Tahoe Solution 723 2**  
**19652356** SHF Solution Jet 58 519

\*Tehama Upward Y238  
 +\*Tehama Mary Blackbird Y684  
 ##Connealy Final Solution  
 SHF Safeguard Jet 519 325

##\*S S Niagara Z29  
**SHF Niagara Erica 617 56**  
**19366009** SHF Blk Grnit Erica 127 1617

##Hoover Dam  
 Jet S S X144  
 ##Connealy Black Granite  
 SHF HH Erica 9 127 361 037

<b>BW</b>
76
<b>WR</b>
92
<b>DAM'S NR</b>
3-92

CED	BW	WW	YW	MILK	\$B	\$C
+8	+8	+62	+116	+26	N/A	N/A

Tehama Tahoe on SS Niagara is a great mating. This heifer's dam is one of the friendliest cows in the herd.

## 114 SHF Solution Jetliner 714100

Birth Date: 03-20-2022

Cow 20575618

Tattoo: 2235

##+\*Tehama Tahoe B767  
**SHF Tahoe Solution 723 2**  
**19652356** SHF Solution Jet 58 519

\*Tehama Upward Y238  
 +\*Tehama Mary Blackbird Y684  
 ##Connealy Final Solution  
 SHF Safeguard Jet 519 325

##+\*Quaker Hill Rampage 0A36  
**SHF Rampage Jetliner 40 325**  
**19046570** SHF 458a Jetliner 731 325

#MCC Daybreak  
 +\*QHF Blackcap 6E2 of4V16 4355  
 SHF New Design Admiral 25 44  
 SHF GF Jetliner 027 93

<b>BW</b>
79
<b>WR</b>
83
<b>DAM'S NR</b>
3-93

CED	BW	WW	YW	MILK	\$B	\$C
+9	+7	+55	+100	+24	+141	+261

Low-birth, low-maintenance female. Top 15% \$EN and \$M coupled with top 40% BW and top 35% \$C.

## 115 SHF Solution Erica 705 103

Birth Date: 03-23-2022

Cow 20575619

Tattoo: 2236

##+\*Tehama Tahoe B767  
**SHF Tahoe Solution 723 2**  
**19652356** SHF Solution Jet 58 519

\*Tehama Upward Y238  
 +\*Tehama Mary Blackbird Y684  
 ##Connealy Final Solution  
 SHF Safeguard Jet 519 325

##\*SAC Conversation  
**SHF Conversation Erica 13**  
**19046716** SHF Pure Prod Erica 013 321

\*Silveiras Conversion 8064  
 ##Lafins Farrah 0252  
 #MCATL Pure Product 903-55  
 +SHF Explorer Erica 16 311 4

<b>BW</b>
74
<b>WR</b>
91
<b>DAM'S NR</b>
3-100

CED	BW	WW	YW	MILK	\$B	\$C
+6	+6	+51	+95	+28	+144	+261

Very much like Lot 114 in performance and EPD profile. Dam is a very solid-producing, docile Conversation daughter.

# Open Heifers & Cows

## 116 SHF Solution Erica 833 108

Birth Date: 04-07-2022

Cow 20575620

Tattoo: 2237

#+\*Tehama Tahoe B767  
**SHF Tahoe Solution 723 2**  
**19652356** SHF Solution Jet 58 519  
  
 #\*Koupals B&B Fort Knox 2077  
**SHF Fort Knox Erica 224 99**  
**19369111** SHF Windy Erica 304 202 64

\*Tehama Upward Y238  
 +\*Tehama Mary Blackbird Y684  
 #\*Connealy Final Solution  
 SHF Safeguard Jet 519 325  
 #\*S Chisum 6175  
 B&B Blkbd Progress 0032  
 #V D A R Really Windy 4097  
 SHF 878 Erica 304 401 8

<b>BW</b>
75
<b>WR</b>
109
<b>DAM'S NR</b>
3-101

CED	BW	WW	YW	MILK	\$B	\$C
+8	+6	+67	+117	+26	+143	+263

This April female ratioed WWR of 109 and is out of a Koupals B&B Fort Knox dam. Top 30% WW and \$C and top 35% in CED, BW, and YW.



The cow offering is one of our best groups with most being AI sired, many with multiple generations of AI in their pedigrees. Our general practice is to sell coming seven year olds. They have left us females to build on, are in their prime production years and have a great future for their buyers since it is not unusual for our cows to be productive past 12 years of age. Over half will have calves at side.



## 117 SHF Black Granite Barb 523

Birth Date: 01-30-2015

Cow 18356796

Tattoo: 1523

#\*Connealy Consensus 7229  
**#\*Connealy Black Granite**  
**17028963** #Eura Elga of Conanga 9109  
  
 #\*Connealy Final Product  
**SHF Final Product Barb 038 7**  
**17363251** SHF FP Barbara 702 79

#\*Connealy Consensus  
 Blue Lilly of Conanga 16  
 #+S A V Bismarck 5682  
 Eura Cal of Conanga 56B  
 \*Connealy Product 568  
 #Ebonista of Conanga 471  
 SHF Focal Point 107 69  
 SHF Objective Barbara 522 12

<b>BW</b>
91
<b>WR</b>
104
<b>NR</b>
6-97

CED	BW	WW	YW	MILK	MARB	RE	\$B	\$C
+8	+1.8	+57	+92	+26	+22	+65	+122	+231

Connealy Black Granite daughters have done very well here. Three daughters of this cow are in the herd and all good. Calving interval of 6-355. Has another good heifer born 12-24-2022, by SHF Visionary.

## 118 SHF Comrade Erica 434 1601

Birth Date: 01-07-2016

Cow 18718258

Tattoo: 1601

#\*Connealy Consensus 7229  
**#\*Connealy Comrade 1385**  
**17031465** Happy Gee of Conanga 919  
  
 #\*Plattmehere Weigh Up K360  
**SHF Weigh Up Erica 78 836**  
**18066270** SHF Thunder Erica 16 403 92

#\*Connealy Consensus  
 Blue Lilly of Conanga 16  
 #+G A R New Design 5050  
 +Hap Gina of Conanga 260 4965  
 #\*Sitz Upward 307R  
 #Barbara of Plattmehere 337  
 #Connealy Thunder  
 SHF 878 Erica 16 311 10

<b>BW</b>
60
<b>WR</b>
101
<b>NR</b>
3-96

CED	BW	WW	YW	MILK	MARB	RE	\$B	\$C
+14	-2.4	+44	+80	+27	+57	+45	+118	+222

Sired by Connealy Comrade and out of a Weigh Up K360 dam. Has a +14 CED which offers a lot of mating choices. Pasture bred to SHF Wallenda 05-01-2022 to 08-01-2022.

# Bred Cows & Pairs

## 119 SHF Fort Knox Erica 312 1616

Birth Date: 02-12-2016

Cow 18715238

Tattoo: 1616

**\*\*Koupals B&B Fort Knox 2077**  
17722785 B&B Blkbd Progress 0032

#\*S Chisum 6175

S Alliance 3313

#S Gloria 464

#S A V Pioneer 7301

#B&B Blkbd Progress 8035

#\*Connealy Final Solution

#Connealy Answer 71

Este of Conanga 364

**SHF Solution Erica 108 312**

17717569 SHF Industry Erica 304 14

#Connealy Industry 5634

SHF Analyst Erica 304 608 8

**BW**

76

**WR**

100

**NR**

4-99

CEB	BW	WW	YW	MILK	MARB	RE	\$B	\$C
+10	+7	+63	+111	+23	+35	+74	+115	+217

A Fort Knox daughter out of an exceptionally good Connealy Final Solution dam. Her first calf was SHF Jet Power by Niagara that was a sale feature in 2019 going to Iowa, and we used him AI. A daughter of this cow is one of our best four-year-olds. Pasture bred to SHF NPP 05-01-2022 to 08-01-2022.

## 120 SHF Weighup Enchant 319 1625

Birth Date: 03-07-2016

Cow 18713519

Tattoo: 1625

**SHF Weigh Up Objective 52**  
18048931 SHF Objective Eileen 615 40

#\*Plattermere Weigh Up K360

#\*Sitz Upward 307R

#Barbara of Plattermere 337

#\*S S Objective T510 OT26

SHF Foreman Eileenmere 512

#Poss Total Impact 745

#TC Total 410

Poss Blackcap 5116

**SHF Impact Enchant 612 319**

17717582 SHF Newsline Enchantress 912

#+Lemmon Newsline C804

%SHF Lucys Boy Enchant 701

**BW**

84

**WR**

107

**NR**

5-99

CEB	BW	WW	YW	MILK	MARB	RE	\$B	\$C
+3	+1.8	+54	+87	+25	+73	+34	+126	+224

Very consistent Weigh Up granddaughter. All of her sons have been in the sale and all daughters retained with a Tahoe-bred daughter selling to Eric Sebree. Pasture Exposed to SHF Wallenda 05-01-2022 to 08-01-2022.

## 121 SHF Rampage ERICA16 057 1626

Birth Date: 03-10-2016

Cow 18716995

Tattoo: 1626

**#+\*Quaker Hill Rampage 0A36**  
16925771 +\*QHF Blackcap 6E2 of 4V16 4355

#MCC Daybreak

#+Boyd New Day 8005

#MCC Miss Focus 134

Ideal 4355 of OT26 2440

SHF Grande Focus 306 98

\*QHF Blackcap 4V16 of 1H8

#S A F Focus of E R

#Tigre Erica 16 419 SHF

**SHF GF Erica 16 116 133**

16763515 SHF Direction Erica 16 009 1

#+BT Direction 65D

#Cornhusker Erica 16 419 SHF

**BW**

84

**WR**

98

**NR**

4-101

CEB	BW	WW	YW	MILK	MARB	RE	\$B	\$C
+8	+4	+57	+96	+22	+33	+71	+125	+213

Quaker Hill Rampage daughter with WR of 4-101 and YR of 2-100 YW. Has an outstanding Tex Playbook daughter in the herd. Pasture Exposed to SHF Wallenda 05-01-2022 to 08-01-2022.

## 122 SHF Master Eileen 221 1628

Birth Date: 03-13-2016

Cow 18713520

Tattoo: 1628

**SHF Master Design 32 12**  
18048956 SHF Objective Barbara 522 12

#\*Connealy Confidence 0100

Connealy Tobin

Becka Gala of Conanga 8281

#\*S S Objective T510 OT26

SHF Grand Design Barbara 326

#\*K C F Bennett Absolute

#\*S A V Final Answer 0035

Thomas Miss Lucy 5152

**SHF Absolute Eileen 20 221**

18054212 SHF 458A Eileen 920 58

SHF New Design Admiral 25 44

SHF Objective Eileen 615 40

**BW**

76

**WR**

102

**NR**

5-98

CEB	BW	WW	YW	MILK	MARB	RE	\$B	\$C
+12	-.2	+52	+97	+24	+69	+54	+137	+244

Deep-bodied cow that produced a Wall Street featured heifer and an Entice daughter in the herd. Bred AI to Growth Fund. Pasture Exposed to SHF Wallenda 05-10-2022 to 08-01-2022.

# Bred Cows & Pairs

## 123 SHF BLK Grnit Erica 129 1630

Birth Date: 03-15-2016

Cow 18715220

Tattoo: 1630

**\*\*Connealy Consensus 7229**  
**\*\*Connealy Black Granite**  
**17028963** #Eura Elga of Conanga 9109

**\*\*Connealy Consensus**  
 Blue Lilly of Conanga 16  
 #+S A V Bismarck 5682  
 Eura Cal of Conanga 56B  
 #K C F Bennett Coalition SCC  
 #SHF BND878 Enchantress 938  
 #Morgans Direction 111 9901  
 SHF New Design Erica 9 652

<b>BW</b>
90
<b>WR</b>
107
<b>NR</b>
4-98

SHF Generations 878 107 50  
**SHF G50 Erica 9 67 540**  
**17051796** SHF Direction Erica 9 030

CED	BW	WW	YW	MILK	MARB	RE	\$B	\$C
+6	+2.3	+52	+84	+26	+42	+60	+120	+223

A cow sired by Connealy Black Granite that has been a good producer. Both of her daughters were kept as replacements. Has a bull calf born 02-04-2023, sired by POSS Rawhide.

## 124 SHF Weighup Erica 336 1632

Birth Date: 03-21-2016

Cow 18713523

Tattoo: 1632

**\*\*Plattemere Weigh Up K360**  
**SHF Weigh Up Objective 52**  
**18048931** SHF Objective Eileen 615 40

**\*\*Sitz Upward 307R**  
 #Barbara of Plattemere 337  
 \*\*S S Objective T510 OT26  
 SHF Foreman Eileenmere 512  
 \*\*SydGen C C & 7  
 #Erica of Ellston C124  
 #+Lemmon Newsline C804  
 +SHF Direction Erica 16 311ET

<b>BW</b>
88
<b>WR</b>
101
<b>NR</b>
4-102

**\*\*Hoover Dam**  
**SHF Hoover Erica 16 602 336**  
**17717605** SHF Newsline Erica 16 221

CED	BW	WW	YW	MILK	MARB	RE	\$B	\$C
+4	+9	+48	+88	+32	+46	+52	+122	+215

This cow's Hoover Dam mother produced several good ones for us including this one. She is the dam of the Lot 40 bull and produced a heifer that went to Eric Sebree. Should calve by sale day to SHF Wallenda.

## 125 SHF Impress Erica 014 611F

Birth Date: 08-15-2016

Cow 19642827

Tattoo: 611

**\*\*Basin Excitement**  
**#+\*Mohnen Impressive 1093**  
**17532083** \*\*Mohnen Jilt 787

+Basin Expedition R156  
 Basin Lady S532 AK  
 Mohnen Brushpopper 353  
 #+\*Mohnen Jilt 1655  
 #Connealy Whitman  
 Entrust of Conanga 894  
 #Leachman Explorer  
 Piere Erica 16 606 SHF

<b>BW</b>
78
<b>WR</b>
N/A
<b>NR</b>
3-98

**\*\*Connealy All Around**  
**SHF All Around Erica 013 26**  
**16772525** +SHF Explorer Erica 16 311 4

CED	BW	WW	YW	MILK	MARB	RE	\$B	\$C
+1	+2.9	+58	+97	+23	+66	+17	+120	+227

A consistent producer sired by Mohnen Impressive. All of her bull calves qualified for the sale. Has a bull calf born 02-04-2023, by SHF Niagara Pure Product.

## 126 SHF All in Barbara 3 356

Birth Date: 01-03-2017

Cow 19046654

Tattoo: 1700

**\*\*A A R Ten X 7008 S A**  
**#Deer Valley All In**  
**17307074** +\*Deer Valley Rita 0274

**\*\*Mytty In Focus**  
 #A A R Lady Kelton 5551  
 \*\*Sitz Upward 307R  
 \*G A R Objective 2345  
 \*\*Kesslers Frontman R001  
 #SHF All Around Eileen 028 19  
 SHF Grande Focus 306 98  
 #SHF 616 Barbara 941

<b>BW</b>
70
<b>WR</b>
111
<b>NR</b>
4-94

SHF Frontman Allround 906 21  
**#SHF Honcho Barbara 521 356**  
**17717633** SHF GF Barbara 102063

CED	BW	WW	YW	MILK	MARB	RE	\$B	\$C
+9	-.7	+64	+109	+22	+57	+36	+122	+211

Daughter of Deer Valley All In. She has a calving interval of 5-346 and a Wall Street heifer born 02-07-2023.



# Bred Cows & Pairs

## 127 SHF HH Erica 16 90 251

Birth Date: 02-25-2017

Cow 19041292

Tattoo: 1737

**SHF Frontman Allround 906 21**  
17163353 #SHF All Around Eileen 028 19

SHF Target 713 105

**SHF Target Erica 16 116 124**  
17363282 SHF Direction Erica 16 009 1

#Kesslers Frontman R001  
#Connealy Front Page 0228  
Kesslers Bell 0024  
#\*Connealy All Around  
SHF Frontline Eileenmere 504  
#\*S S Objective T510 0T26  
SHF BV 473 Eileenmere 512  
#+BT Direction 65D  
#Cornhusker Erica 16 419 SHF

**BW**  
96  
**WR**  
111  
**NR**  
4-85

CEB	BW	WW	YW	MILK	MARB	RE	\$B	\$C
-1	+3.1	+49	+76	+19	+34	+39	+94	+181

This granddaughter of Kesslers Frontman had an outstanding individual record of WWR of 111 and YWR of 105. She is a good-uddered, moderate cow. Should calve by sale day to SHF Wallenda.

## 128 SHF AB29 Barbara 623 85

Birth Date: 02-28-2018

Cow 19362834

Tattoo: 1830

**SHF Aviator Bismark 1671 20**  
18705122 SHF Bismark Barbara 102 26

SHF Consistent 100

**SHF Consistent Barb 018 1623**  
18713517 SHF None Better Barb 27 018

#\*Musgrave Aviator  
#\*Koupals B&B Identity  
MCATL Forever Lady 1429-138  
#+S A V Bismarck 5682  
#SHF 616 Barbara 941  
#\*Connealy Final Product  
SHF Pfred Erica 043 10  
\*Riverbend None Better Y095  
#SHF CC&7 Barbara 709 33

**BW**  
66  
**WR**  
101  
**NR**  
1-102

CEB	BW	WW	YW	MILK	MARB	RE	\$B	\$C
+12	-1.8	+52	+85	+29	+43	+37	+113	+236

A Musgrave Aviator granddaughter that is moderate and easy keeping. Her first daughter was a featured heifer in our sale. Pasture Exposed to SHF Niagara Pure Product 05-15-2022 to 08-01-2022.

## 129 SHF Playbook Enchant 612 20

Birth Date: 01-16-2019

Cow 19654928

Tattoo: 1907

**#+\*TEX Playbook 5437**  
18414912 +\*Rita 1C43 of 9M26 Complete

#+Lemmon Newline C804

**SHF Newline Enchantress 912**  
15470250 %SHF Lucys Boy Enchant 701

#+\*Basin Payweight 1682  
#\*Basin Payweight 0065  
21AR O Lass 7017  
#\*Summitcrest Complete 1P55  
+\*Rita 9M26 of Rita 5F56 Prod  
#B/R New Design 036  
White Fence Pride H1  
#+V D A R Lucys Boy  
Scotch Cap Enchantres413 SHF

**BW**  
77  
**WR**  
105  
**NR**  
1-89

CEB	BW	WW	YW	MILK	MARB	RE	\$B	\$C
+8	+1	+48	+79	+31	+54	+20	+108	+217

A front-pasture, Tex Playbook daughter out of a Lemmon Newline cow with a record of 11-104 WW. This cow's first daughter by S A V Rainfall is in the herd. Pasture Exposed to Niagara Pure Product 05-1-2022 to 08-01-2022.

## K SHF Wallenda 738 12

19951219

SIRE: #\*S S Niagara Z29

Dam: #+Lemmon Newline C804

CEB	BW	WW	YW
-1	+3.0	+75	+138

## L SHF Niagara PureProd 322 76

19652279

SIRE: #\*S S Niagara Z29

Dam: #MCATL Pure Product 903-55

CEB	BW	WW	YW
+10	-1.1	+53	+99

## M Poss Rawhide

+\*19416968

SIRE: \*Poss Maverick

Dam: Poss Easy Impact 0119

CEB	BW	WW	YW
+13	-3	+83	+137

## **A Bit of History About Our Herd**

We have only purchased a handful of cows in the history of our herd. One of them was a daughter of 561, produced in the Jorgensen Angus herd from Ideal, SD. I remember the 561 cow well. She was born in 1975. Her first calf was the popular Jauer Band 105. She is also 8 generations back in the Lot 29 Growth Fund son pedigree.



**Finished the silo with good help: Jeremiah, Jon and Chris**

## **Thank you to Business Partners & Friends**

Bushnell Veterinary Service, Nutrien, Monte Rowland at Ursa Farmers Coop, Lyle Nelson at Alpha Feed, WGM, Tad White, Scott and Mary Perilles family, John and Sandy O'Neill, Chris Marinich, Rob Link, Jeremiah Larson, Ethan Sebree, Jacob Tompkins, Jon Penning and Charity Long.



# **A Big Thank You**

to our employees for all their hard work.  
Paul Doubet, Chris Zimmerman, Sarah Von  
Qualen, Caitlyn and Darby.



**And a huge thanks to all our  
customers, new and repeat!  
We appreciate your business!!**

**Sunnyhill Angus Farm**  
34441 N IL HWY 97  
Fairview IL 61432

# Annual Sale March 11

PRSR  
FIRST CLASS  
U.S. POSTAGE  
**PAID**  
St. Joseph, MO  
Permit #2017